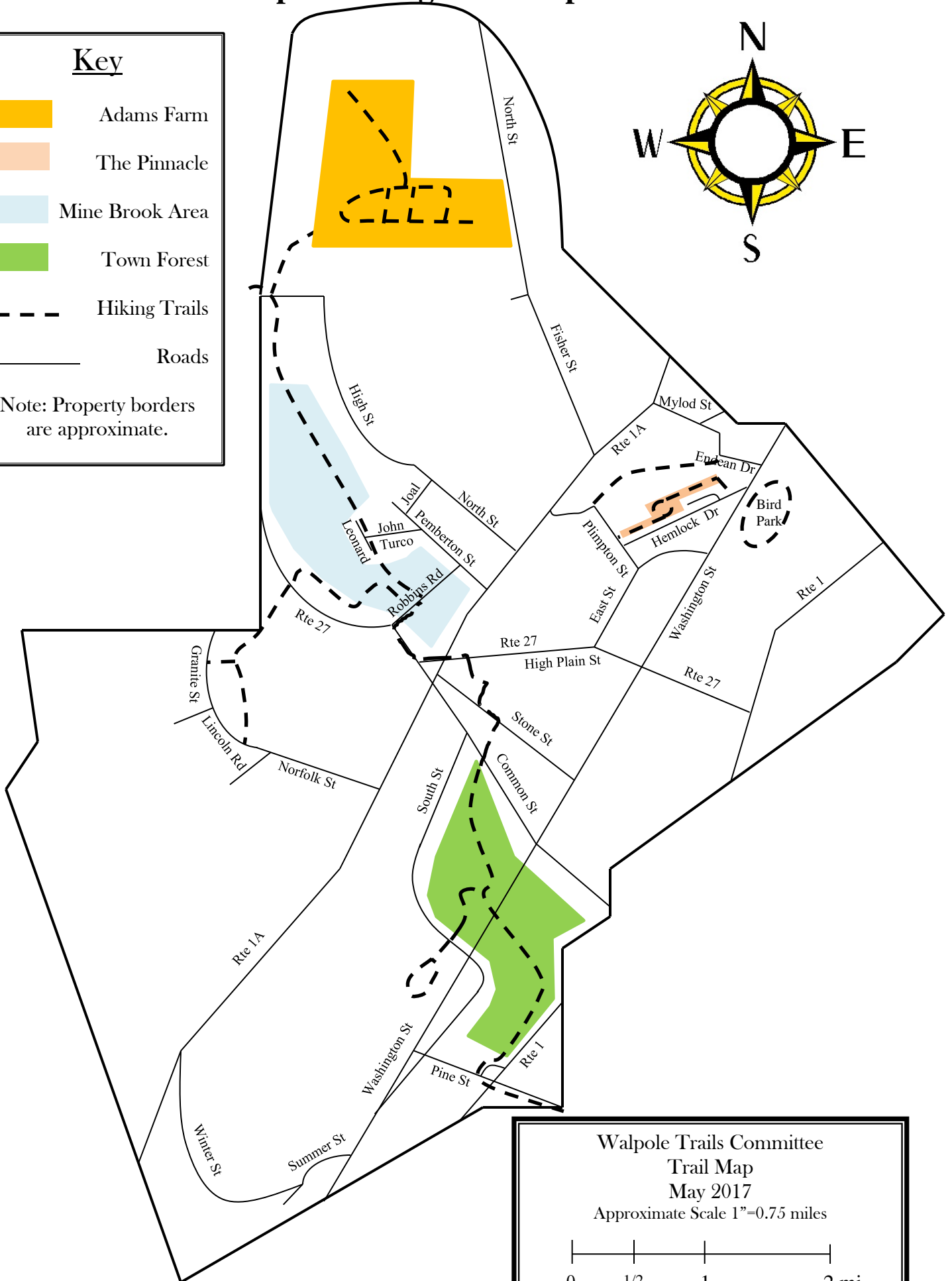
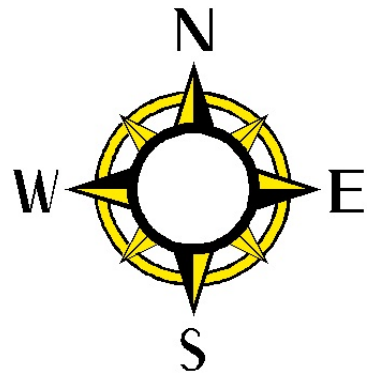


# Walpole Hiking Trail Map

**Key**

- Adams Farm
- The Pinnacle
- Mine Brook Area
- Town Forest
- Hiking Trails
- Roads

Note: Property borders are approximate.



Walpole Trails Committee  
Trail Map  
May 2017  
Approximate Scale 1"=0.75 miles

# Walpole Trails Guide

## Table of Contents

Walpole Hiking Trails Map.....	Front Cover
Foreword by the Trails Committee.....	3
Adams Farm.....	4
Adams Farm-High St Trail.....	5
As-Yet Unnamed Trail.....	6
Bay Circuit Trail-Section 1.....	7
Bay Circuit Trail-Section 2.....	8
Bay Circuit Trail-Section 3.....	9
Elm St School-Turner Pond Conservation Land Trails.....	10
Endean Trail.....	11
Francis William Bird Park.....	12
Goetz Trail.....	13
Jarvis Farm.....	14
Route 1A Playing Fields Complex.....	15
South St Trail.....	16
Spring Brook Conservation Area.....	17
The Pinnacle.....	18
Walpole Town Forest.....	19

# Walpole Trails Committee

The Walpole Trails Committee was established in 1998. As the Bay Circuit Trail (BCT) was being routed through Walpole, the Bay Circuit Alliance asked the Walpole Conservation Commission to create a Trails Committee whose function would be to help in creating the BCT, and afterwards to maintain it. Over the years the **mission** of the Trails Committee has changed a bit, and is shown below:

**The Trails Committee seeks to preserve and promote the Trails and Natural Areas of Walpole for the enjoyment of the Community.**

Activities for the Trails Committee fall into two broad categories: Outreach & Trail Work.

**Outreach** activities are intended to raise people's awareness of the many wonderful trails available for hiking in Walpole, and to encourage people to get out on those trails.

**Trail work** are those activities related to trail marking, clearing and maintenance.

The Trails Committee is responsible for overseeing approximately 50 miles of hiking trails, most on public property. Membership in the Trails Committee is voluntary. We receive a budget authorized by the Board of Selectmen. Donations are greatly appreciated and can be made to the Trails Committee Gift Account. Donations may be tax deductible.

It is the hope of the Trails Committee that people find this Trails Guide helpful in identifying the location of trails and access points at various locations around Walpole.

Please visit the Trails Committee website at: <https://walpoletrails.org/>

Please send any questions, or report any trail blockages or suggestions for improvements to the Trails Committee website, and Happy Hiking!

Gary Riggott  
Walpole Trails Committee Chairman  
Email: [4RIGGOTT@COMCAST.NET](mailto:4RIGGOTT@COMCAST.NET)  
April 26, 2021

# Adams Farm

Adams Farm is located at 999 North St. in Walpole.

Adams Farm has an extensive network of trails that are well-marked. The total distance of trails in the network is estimated to be about 10 miles.

Please click on the link below to go to the Adams Farm website. You can learn more about the property and download a trail map. Better yet, go to the Farm and pick up one of their pre-printed, detailed maps. If you'd like an Adams Farm Trail Map mailed to you, that can be arranged through the contact information on the website.

<http://www.adams-farm.com/>





# The Adams Farm-High St Trail

## Description:

This trail leads from the west end of Adams Farm under the power lines and emerges on High Street, near the Medfield town line and the north end of the Bay Circuit Trail. The Blue Trail at Adams Farm will lead you to the back field. Orange markers can be seen to your left (west). Follow the Orange markers to the power line then walk west until High St.

## Terrain:

This trail is rolling.

## Length:

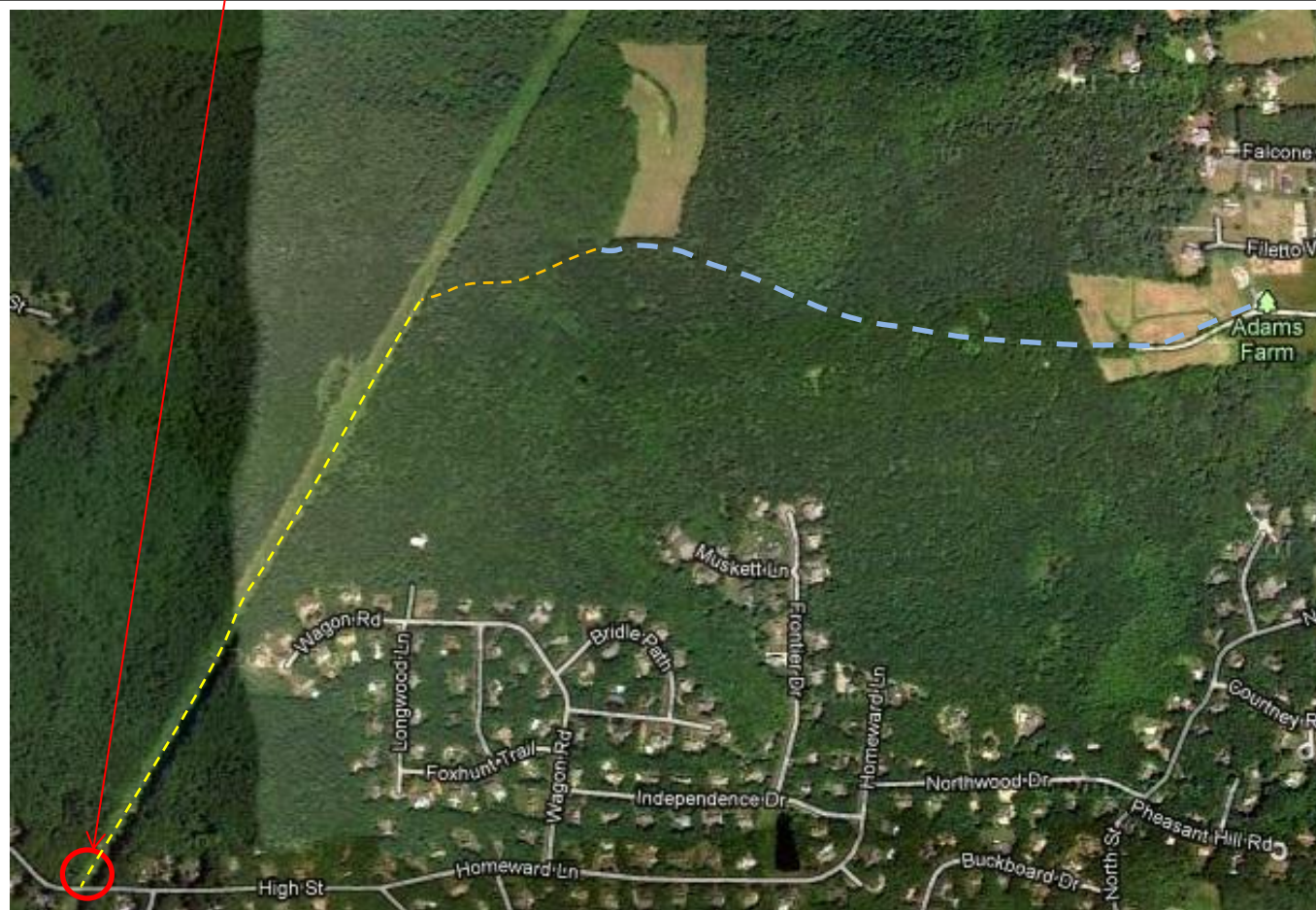
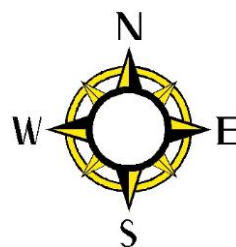
The length of trail (yellow) is about  $\frac{3}{4}$  mile. From High St to the Adams Farm barn is about  $1\frac{3}{4}$  miles.

Scale as shown: 1"=1000 ft

## Parking:

West End-The Trailhead shown in the photo is found near the Walpole-Medfield border, where the power line crosses over High St. Park on either side of High St, well off the road. Do not impede access to the gates on either side of High St  
East End-Park at the Adams Farm barn.

West End Trailhead



# The As-Yet Unnamed Trail

## Description:

The As-Yet Unnamed Trail goes between Johnson Middle School and the CSX railroad tracks. Follow the trail around the playing fields, then turn west and follow the trail markers. The Trails Committee does not have permission to walk on the railroad tracks. Hikers should not be on school property while school is in session. Trail markers on this trail are LIGHT BLUE.

## Terrain:

This trail is flat along the playing fields, then turns hilly as you enter the woods.

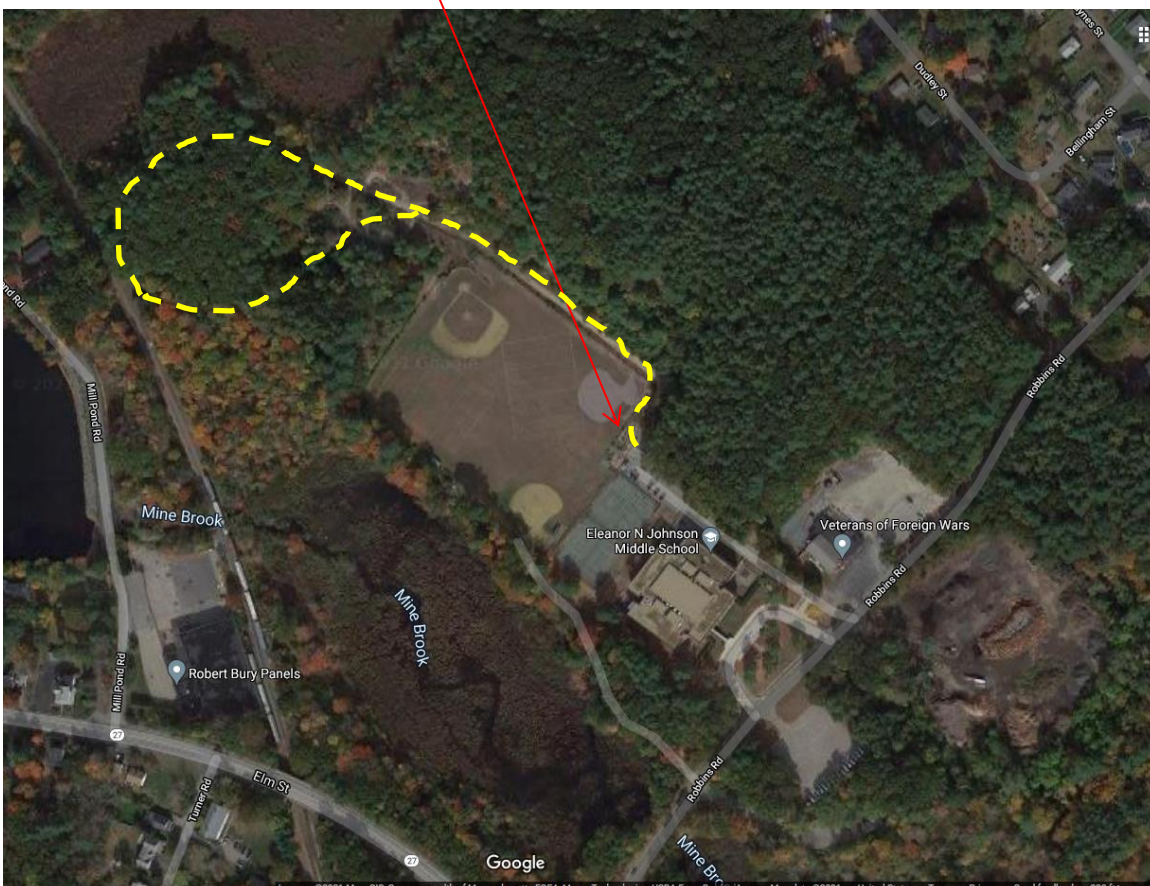
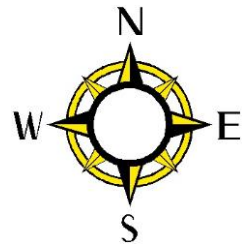
## Length:

The total length of trail is about  $\frac{1}{4}$  mile. Scale as shown: 1"=350 ft

## Parking:

West End-The Trailhead shown in the photo is found in the lot behind Johnson Middle School.

West End Trailhead





# The Bay Circuit Trail-Section 1

## Description:

The Bay Circuit Trail (BCT) spans 200 miles, from Plum Island to Kingston. The Walpole stretch is 8.3 miles long. The BCT has an excellent website at <http://www.baycircuit.org/>. Click the "Maps & Guides" link, and then click the "Maps & Trail Description" link. The descriptions are detailed and informative. Walpole is in Section 10 along with Medfield & Sharon. I have split the BCT into 3 sections in order to provide sufficient detail on each part. Section 1 is from the Medfield line to Robbins Road. Trail markers on the BCT are WHITE, with occasional square, colored BCT markers.

## Terrain:

The northern end of the BCT under the power line is steep, as are the eskers (look it up!) in this section. There are wonderful views of Mine Brook, which provides a third of Walpole's water. This may be the prettiest trail in town.

## Length:

The total length of this section of the BCT is 3.2 miles. Scale as shown in the photo: 1"=2000 ft

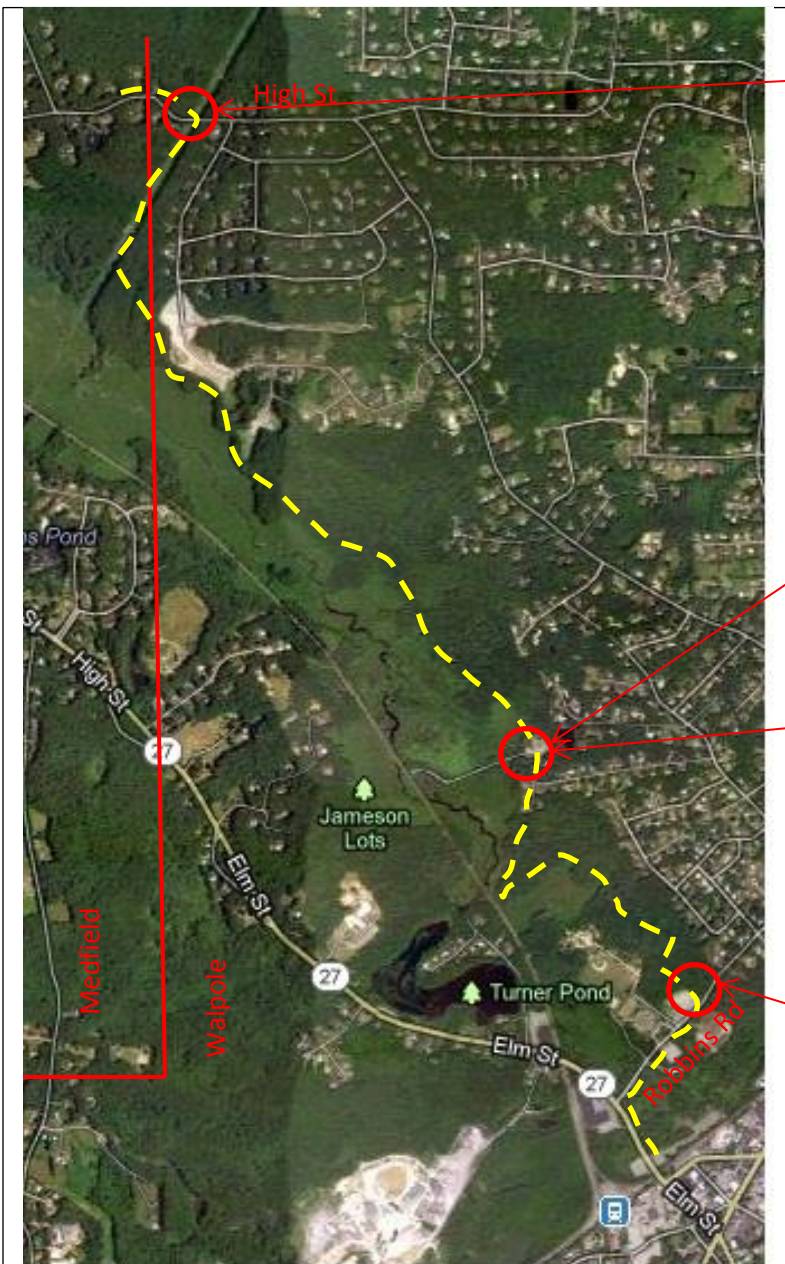
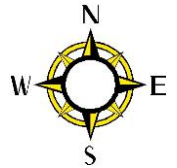
## Parking:

North End: There is a small lot under the power line at the Walpole-Medfield line. See photo.

Mid-point: Park outside gate of water treatment facility on Leonard Rd-do not impede vehicle access.

The trailhead is behind building, see photo.

South End: Park at Johnson Middle School and walk to the trailhead at the east end of the VFW parking lot.



High St Parking Area



Leonard Rd Water Plant



Leonard Rd Trailhead



Robbins Rd Trailhead





## The Bay Circuit Trail-Section 2

### Description:

Section 2 of the BCT in Walpole is from Robbins Road to the High School. Trail markers on the BCT are WHITE, with occasional square, colored BCT markers. For a detailed trail description, see the BCT website.

### Terrain:

This middle section of the BCT is flat with about one-eighth of the length in woods and two-thirds on roads.

### Length:

The total length of this section of the BCT is 2.0 miles. Scale as shown in photo: 1"=1000 ft

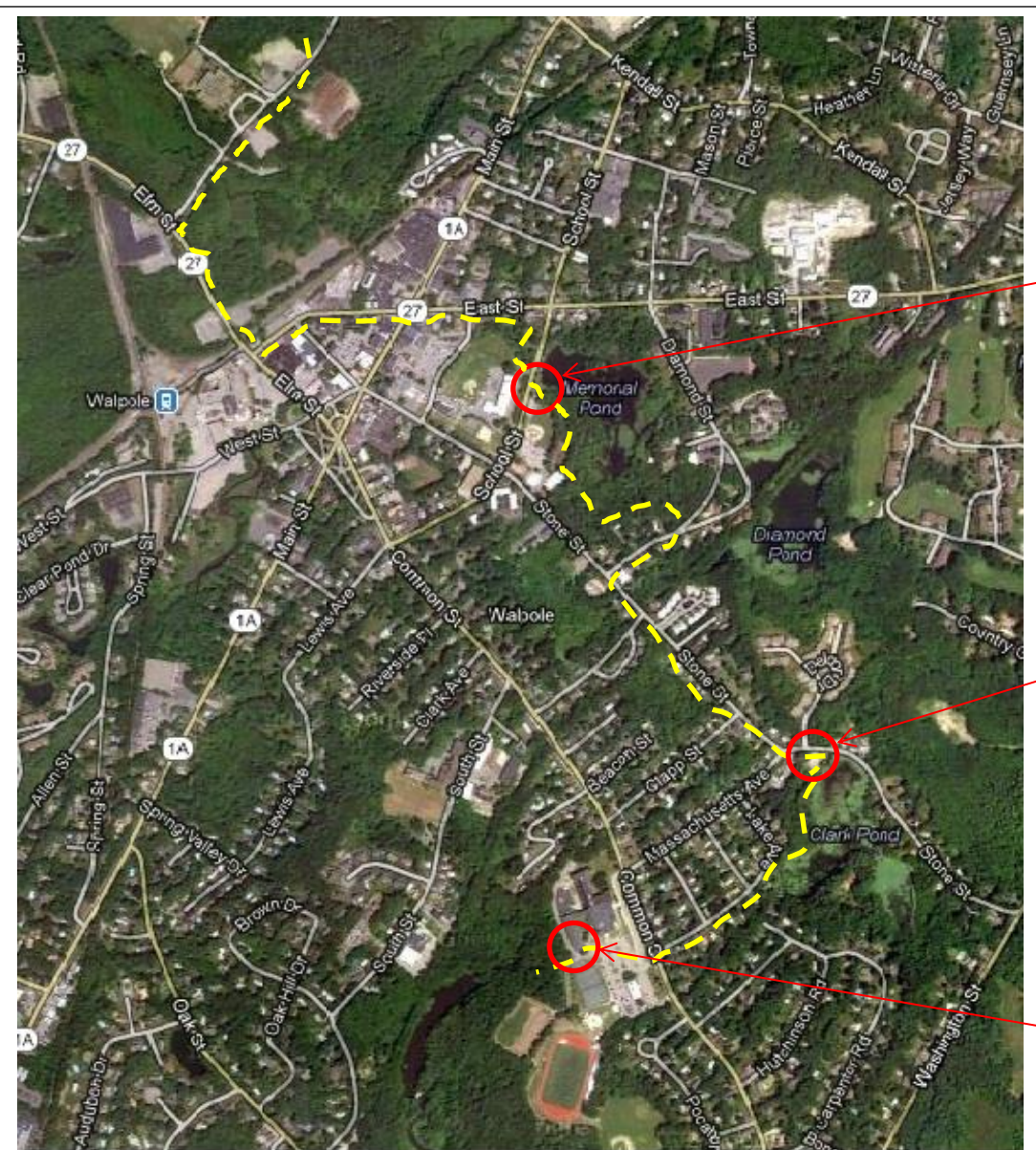
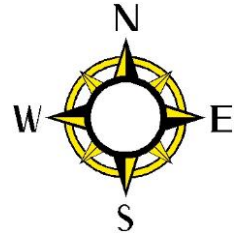
### Parking:

North End: Again, park at Johnson Middle School.

Mid-point 1: There is a parking area next to Memorial Pond, across from Town Hall.

Mid-point 2: There is a parking area at Clark's Pond

South End: Park in the lot behind the high school. The trailhead is near the basketball court.



Memorial Pond Parking Area



Clark's Pond Parking Area



High School Parking





## The Bay Circuit Trail-Section 3

### Description:

Section 3 of the BCT in Walpole is from the High School to Pine St, where the BCT continues into Sharon. Trail markers on the BCT are WHITE, with occasional square, colored BCT markers. The short trail from the South St parking area to the BCT has blue markers. For a detailed trail description, see the BCT website.

### Terrain:

This section of the BCT is mostly flat and almost entirely wooded.

### Length:

The total length of this section of the BCT is 3.1 miles. Scale as shown in photo: 1"=1300 ft

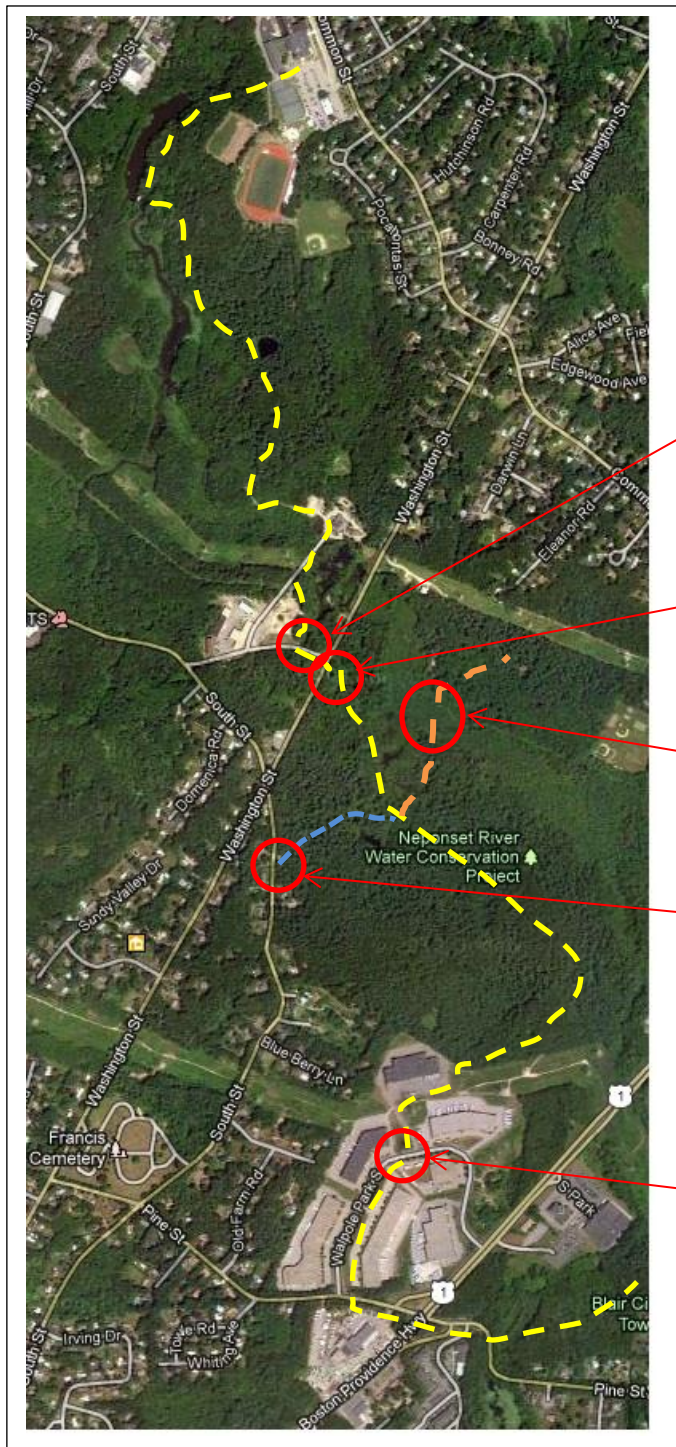
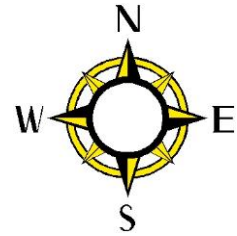
### Parking:

North End: Park at the lot near the basketball hoop behind the high school.

Mid-point 1: Park on the side of the access road to the Town Garage.

Mid-point 2: Park in the small lot across from 673 South St.

South End: Park off the side of the road in Walpole Park South (WPS).



Trail Access at DPW



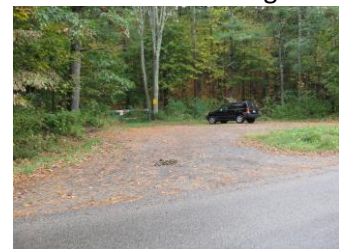
Trail Access Opposite DPW



Town Forest-Jarvis Farm Boardwalk



672 South St Parking Lot



Walpole Park South place where BCT meets road



Walpole Park South looking toward Pine St





# The Elm St School Nature Trail-Turner Pond Conservation Land

## Description:

The Elm St School Nature Trail is located within the Turner Pond Conservation Land. This conservation area comprises about 25 acres. The east end of this area meets the CSX railroad tracks. The Trails Committee does not have permission to walk on the railroad tracks. This trail offers wonderful views of Mine Brook, which teems with wildlife. There are two trailheads to enter this network of nature trails behind the Elm St School. Hikers should not be on school property while school is in session. Trail markers on this trail are LIGHT BLUE.

## Terrain:

These trails are flat.

## Length:

The total length of trails is about 1.3 miles. Scale as shown: 1"=350 ft

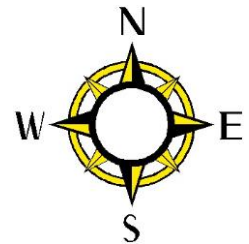
## Parking:

West End-Park at the Elm Street School (only when school is not in session).

Trailhead 1



Trailhead 2





# The Endean Trail

## Description:

The Endean Trail was initially established many years ago, and then fell into disrepair. In 2007 an Eagle Scout re-established the trail and put up trail markers. The trail offers beautiful views of Plimpton Pond, the Neponset River and Bird Pond. The trail has been the site of 3 other sets of improvements by other Eagle Scouts since it was reestablished. Trail markers are orange.

## Terrain:

The section of trail at the north edge of Plimpton Pond is challenging. The trail traverses a steep slope. The balance of the trail is flat.

## Length:

The Endean Trail is approximately one mile long. Scale as shown is: 1"=650 ft

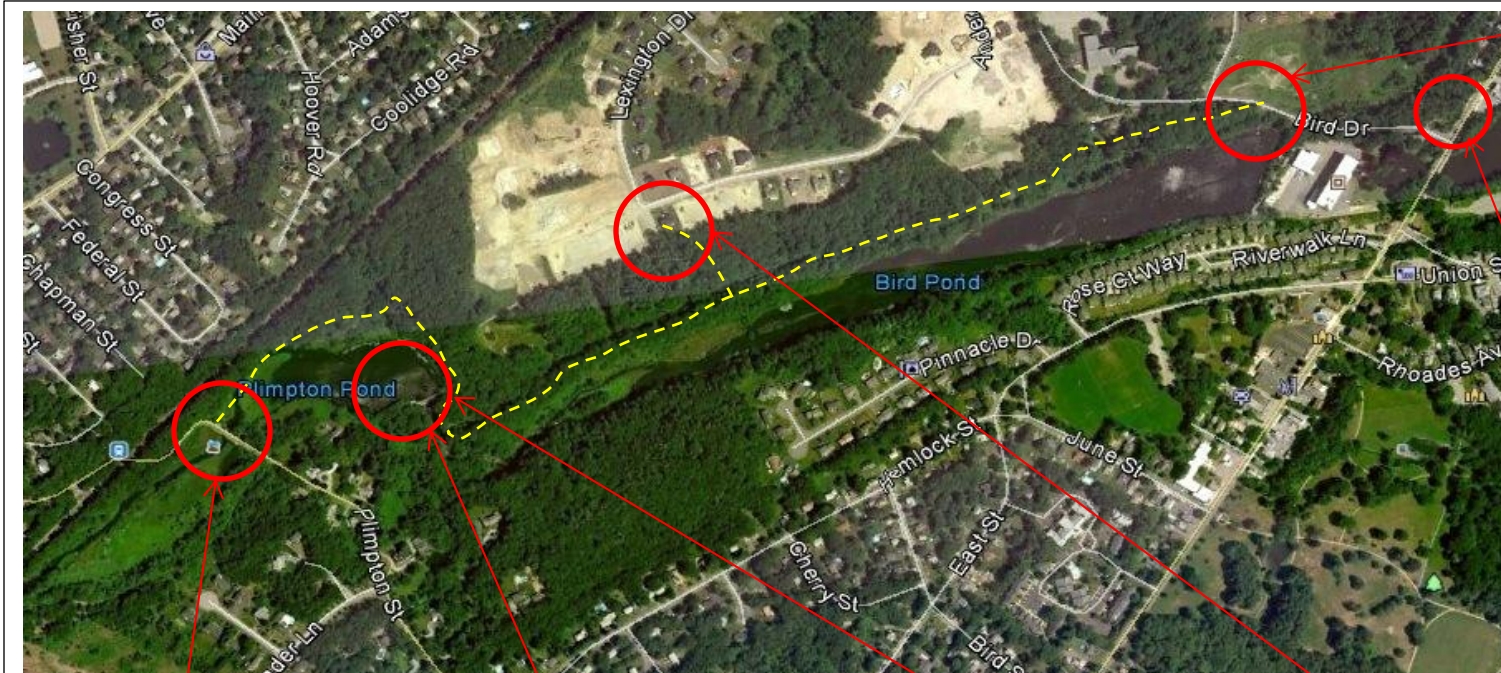
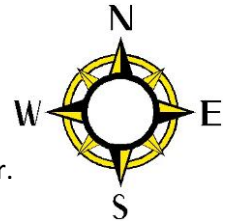
## Parking:

East End- Trailhead is half-way up Bird Dr (or Mansion Dr or Endean Dr). Park at the small lot next to Washington St on north side of Mansion Dr.

West End- There are a few parking spaces on the gravel area near Dog Rock on Plimpton St.

Mid-point Access-There is a public lot at the intersection of Lexington Dr and Anderson Way within the Endean Estates development.

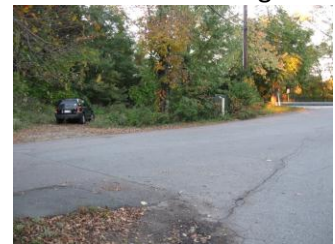
Trail Highlights are shown.



East End Trailhead



East End Parking



West End Trailhead



View from Plimpton Dam



View of Plimpton Dam



Mid-Point Access



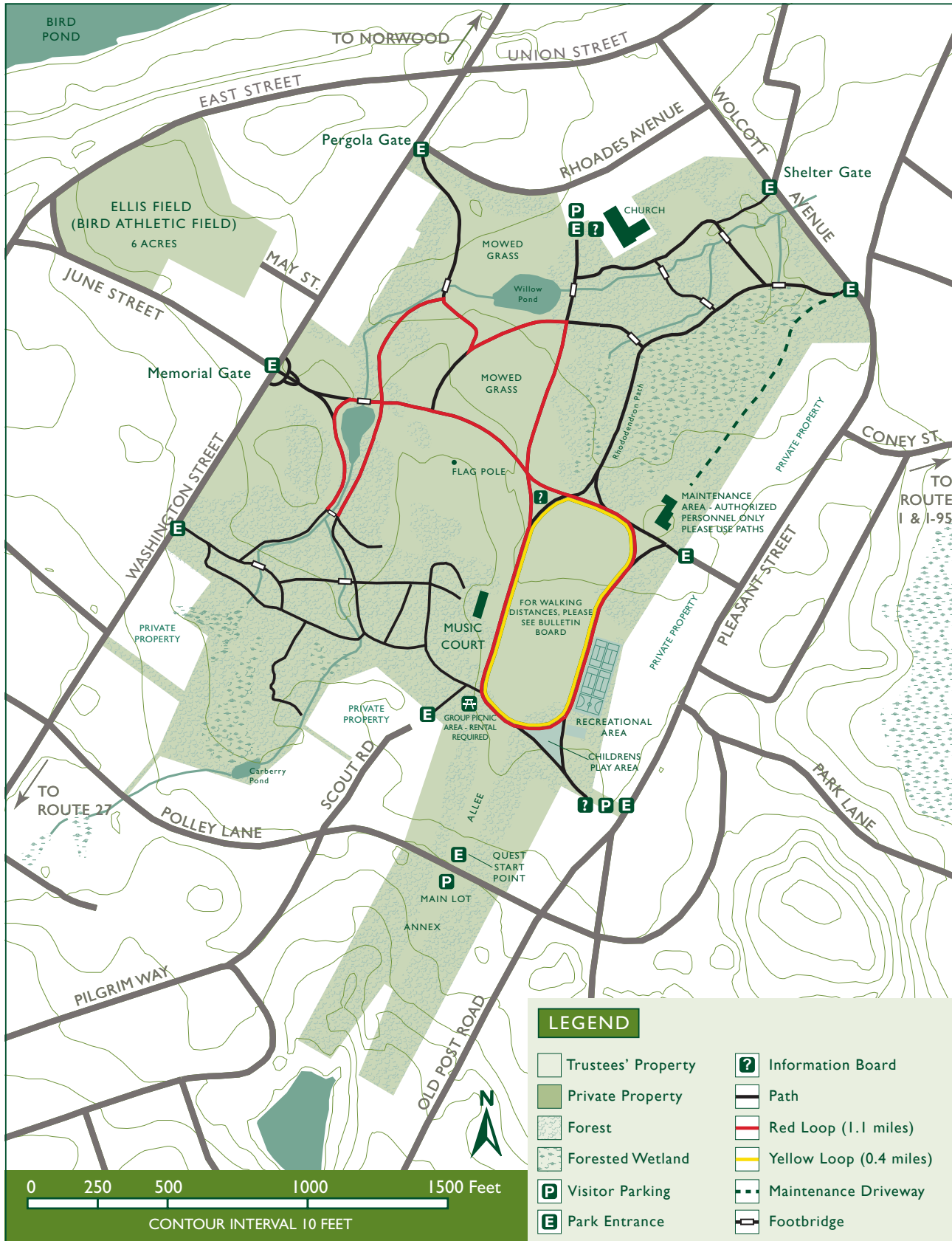




# FRANCIS WILLIAM BIRD PARK (89 ACRES)

Washington Street ▪ Walpole, Massachusetts

508.668.6136 ▪ [greaterboston@ttor.org](mailto:greaterboston@ttor.org) ▪ [www.thetrustees.org](http://www.thetrustees.org)



BIRD WATCHING



CROSS-COUNTRY SKIING/  
SNOWSHOEING



DOG WALKING



MOUNTAIN BIKING  
PERMITTED



PICNICKING



QUEST



WALKING /  
HIKING (EASY)



MOBILITY-IMPAIRED  
ACCESS



PRIVATE FUNCTIONS /  
EVENTS

# The Goetz Trail

## Description:

The Goetz Trail was dedicated in October 2007 and named for Al Goetz, a long-time member of the Walpole Conservation Commission, a founding member of the Walpole Trails Committee and active member of many other town entities. Trail markers on this trail are WHITE.

## Terrain:

This trail is as flat as can be. There can be some muddy areas after rainy periods.

## Length:

The trail is about  $\frac{3}{4}$  mile long from Elm St to Lincoln Rd. The Granite St spur is about  $\frac{1}{4}$  mile long. Scale as shown in photo: 1"=800 ft

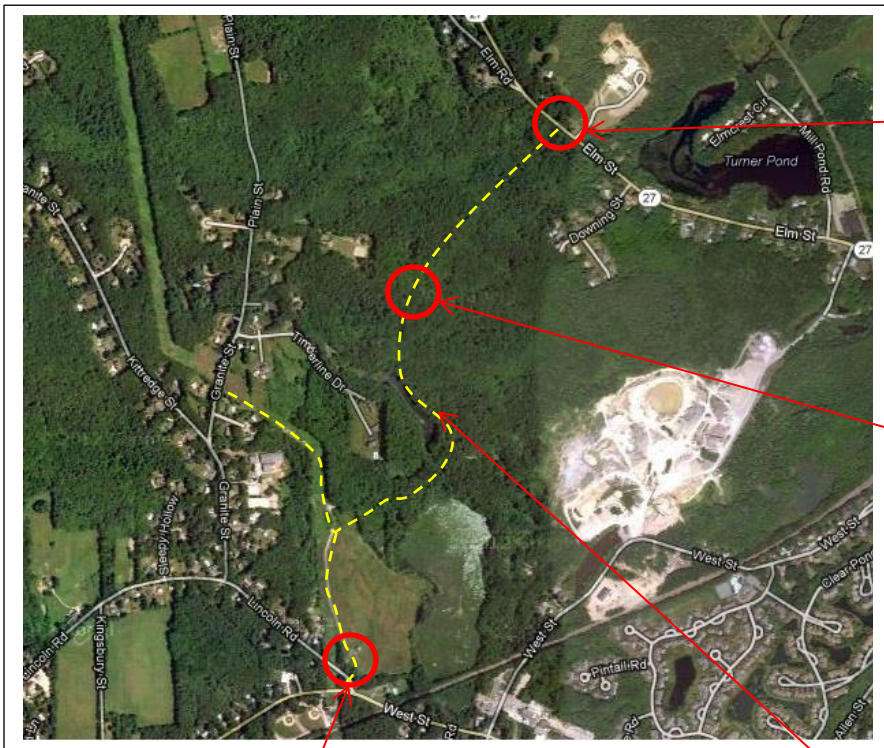
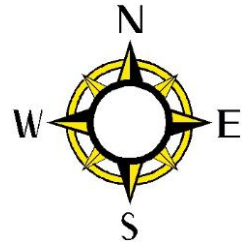
## Parking:

North End-Park at Elm St School. Trailhead is about 100 yards north of the entrance of Elm St School, across from 435 Elm St.

Lincoln Road End- Park at the small lot near the intersection of Lincoln Road and West St.

The trailhead is at the right of the parking area.

Granite St End- There is no parking here, but you can continue hiking under the power line visible on the map below.



North End Trailhead



Walpole-Medfield Benchmark



South End Trailhead & Parking



Pretty Pond



A great place for a picnic!



# Jarvis Farm

## Description:

Jarvis Farm is the former Sharon Country Day Camp, a ~25 acre parcel bought by Walpole's Water Department in 2015. The property has wonderful open spaces and recently renovated playing fields. The Jarvis Farm-Town Forest Boardwalk connects Jarvis Farm to the East Parcel of the Town Forest.

## Terrain:

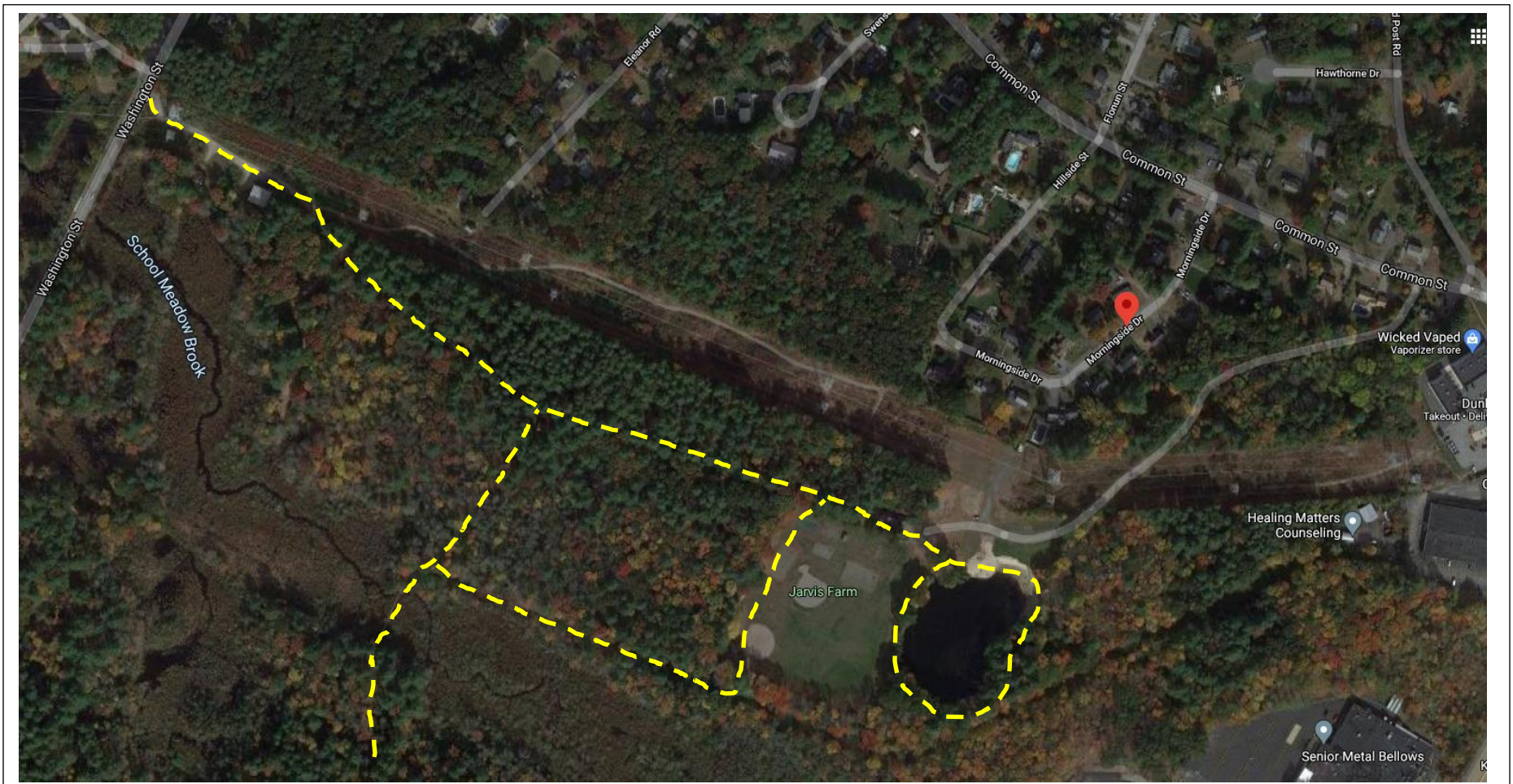
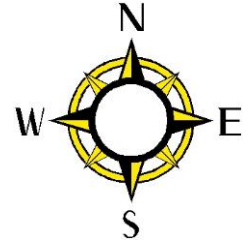
These trails are flat.

## Length:

The total length of trails is still to be determined. Scale as shown: 1" = 400 ft

## Parking:

Ample parking exists on the property. Be aware of the closing times posted on the gates of the property.





# The Route 1A Playing Fields Complex

## Description:

The Route 1A Playing Fields complex is new and this map may change in the future. A network of trails existed here prior to the formation of the playing Fields Complex and part will remain in the future. The Old Colony Railbed, the same line that runs behind the Senior Center, abuts the Fields Complex. A Metacomet Greenway group is currently working toward creating a rail trail on this railbed. The Fields Complex will be the northern terminus. The rail trail is shown below and passes behind the Southwood Hospital site.

## Terrain:

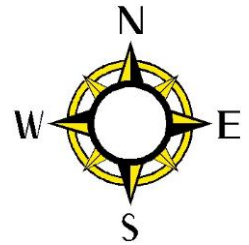
These trails are flat or rolling.

## Length:

The total length of trails is still to be determined. Scale as shown: 1" = 600 ft

## Parking:

Ample parking exists at the Fields Complex.





## South Street Loop Trail

### Description:

The South St Loop Trail sits on conservation land adjacent to the Neponset River off South St, near the Tufts Animal Hospital. This is an out-and-back trail.

### Terrain:

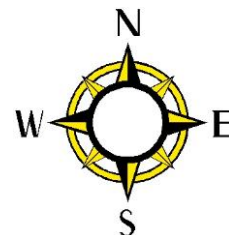
The terrain is flat and entirely wooded.

### Length:

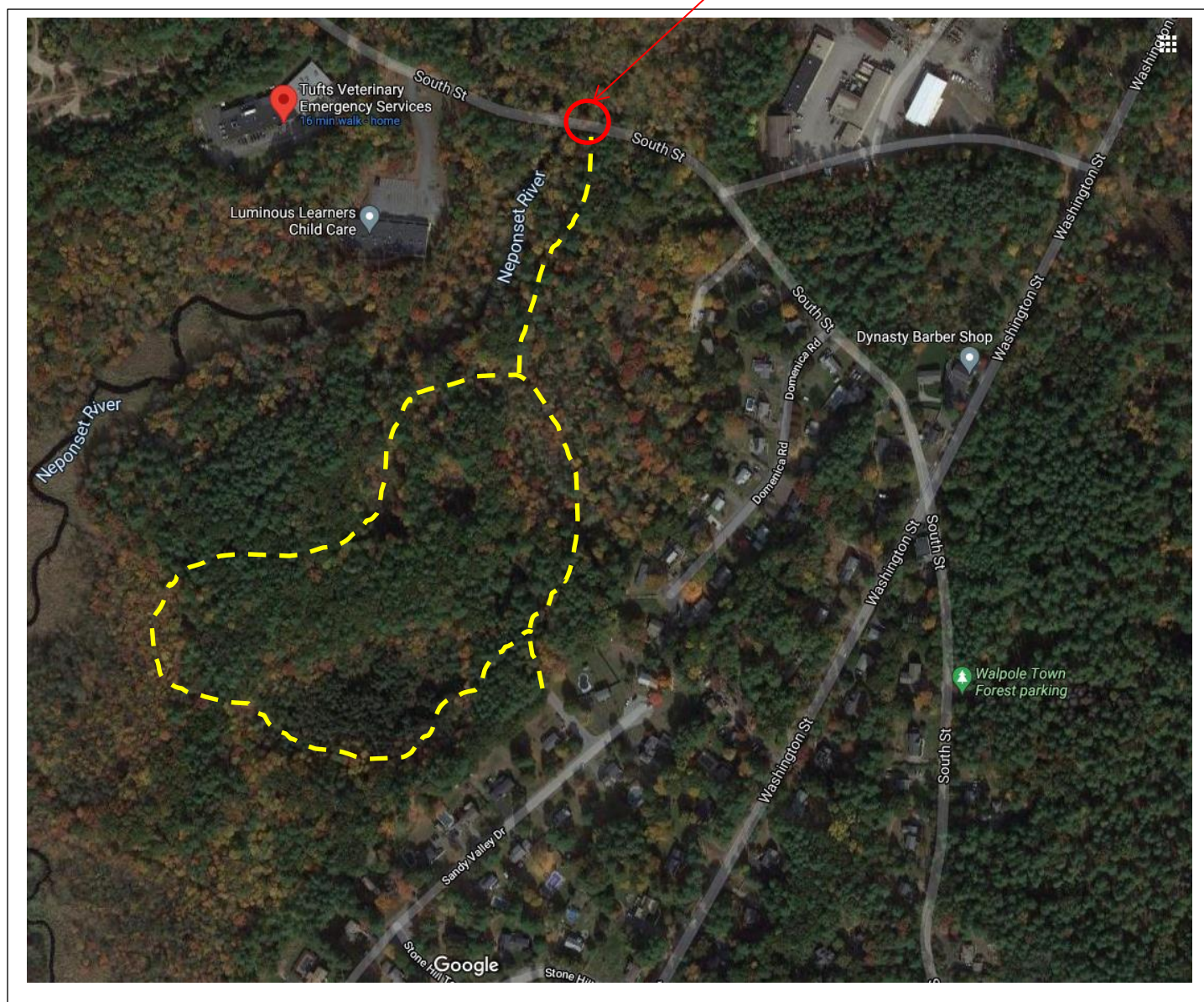
The total length of this trail is 1.3 miles. Scale as shown in photo: 1"=550 ft

### Parking:

There is parking for one car at the Trailhead. On week ends you can probably park at Tufts Animal Hospital.



Parking Area where South St  
Meets the Neponset River





# Spring Brook Conservation Area

## Description:

The Spring Brook Conservation Area is the land surrounding the Spring Brook Reservoir. A well-used path circles the reservoir. CAUTION: This trail abuts the Walpole Country Club. Stay on the path and be aware of golfers, especially if they yell "Fore". This means a golf ball is coming in your direction. Protect your children and then protect yourself.

## Terrain:

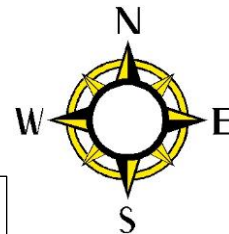
Once you ascend a short, steep climb from the parking lot to the trail, the terrain is flat. The path is mostly open, with a short, wooded section at the south of the loop.

## Length:

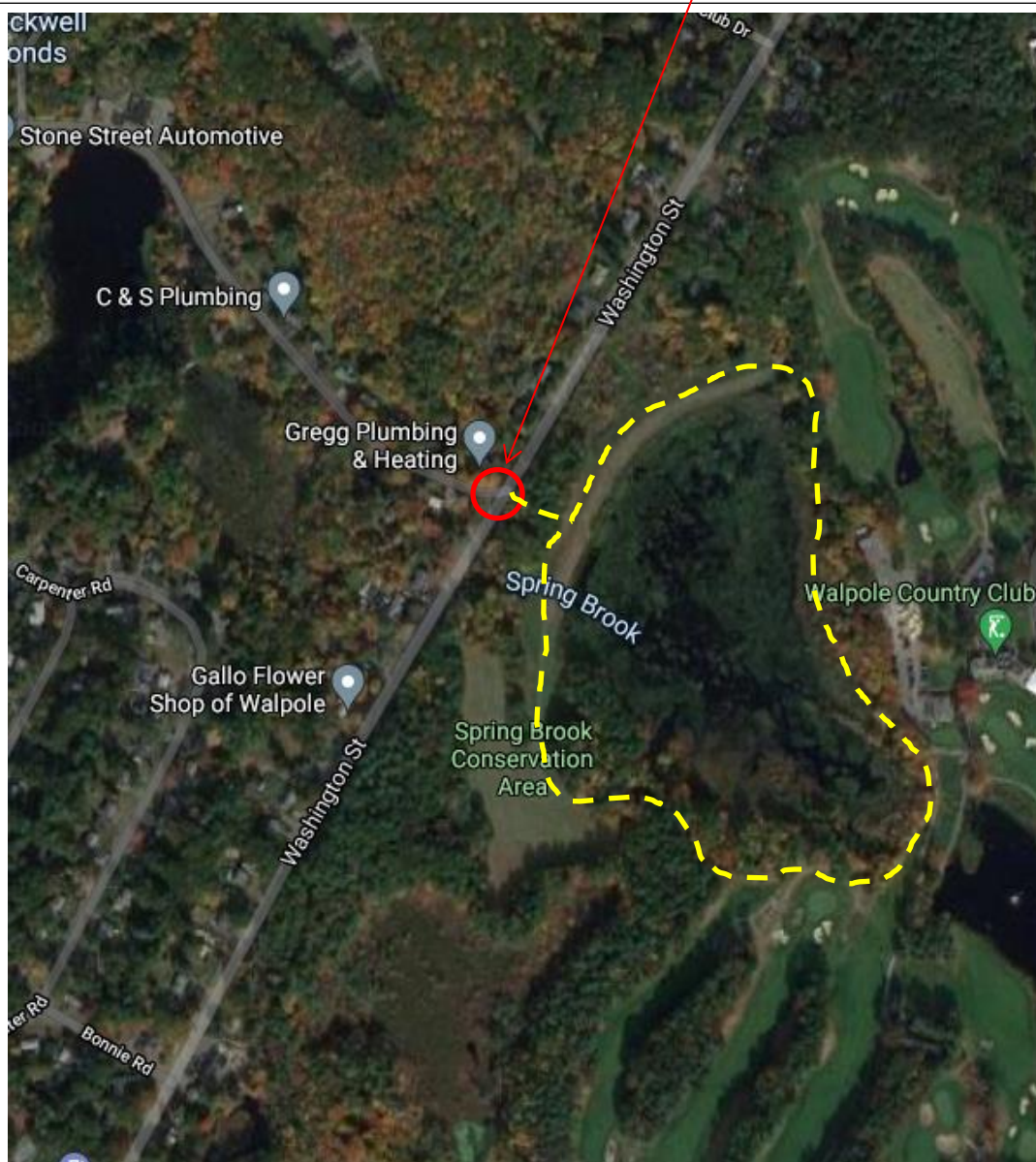
The total length of this trail is 1.1 miles. Scale as shown in photo: 1"=550 ft

## Parking:

Use the parking area where Stone St meets Washington St.



Parking Area where Stone St meets Washington St





## The Pinnacle

### Description:

The Pinnacle is an 18 acre parcel of town-owned land in East Walpole bounded by the Neponset River to the north, Pinnacle Drive to the east, Hemlock Drive to the south and Plimpton Street to the west. "The Pinnacle" itself is a 200 foot high precipice overlooking the Neponset River. A fascinating historical essay on The Pinnacle exists on the Trails Committee website. The trails are marked by BLUE and RED markers.

### Terrain:

The eastern and western trails on The Pinnacle property are flat. A chronically wet and treacherous stretch of trail near the Neponset has been rendered safe by the construction of a 100 foot long bog bridge in October 2011. The interior (red) loop trail can be challenging due to the steep terrain.

### Length:

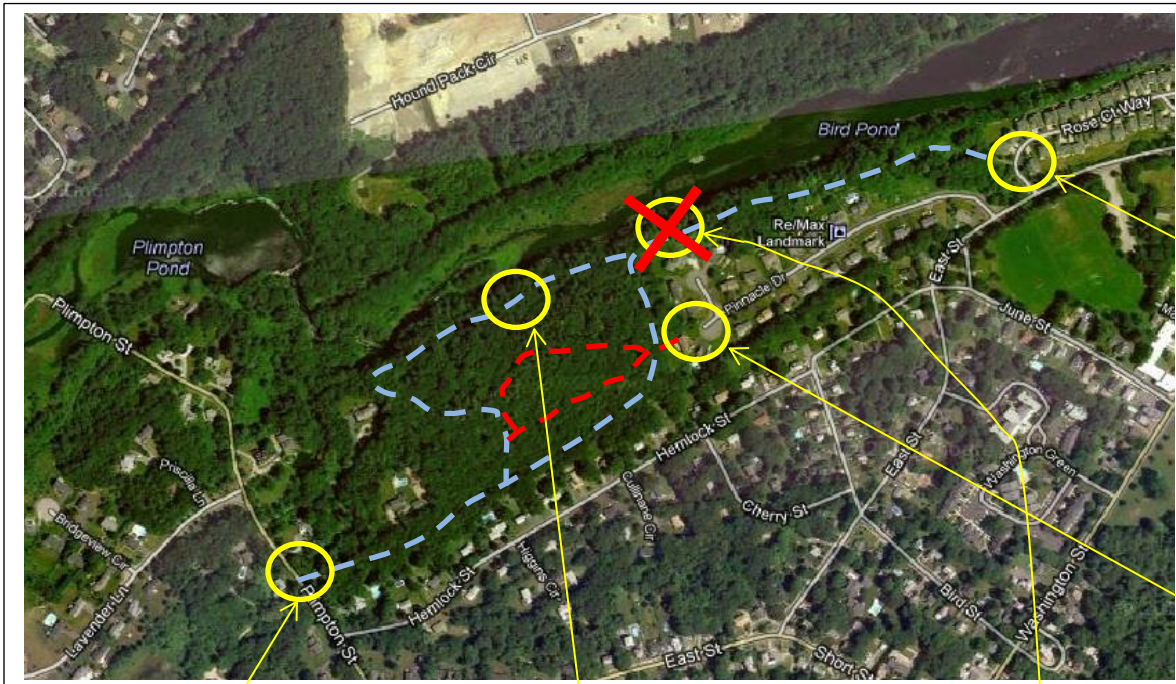
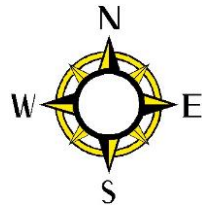
The total length of trails in The Pinnacle is about 2 miles. Scale as shown in the photo: 1"=650 ft

### Parking:

East End: Park in the Ellis Soccer Field parking lot and walk to the trailhead off Rose Court in the Riverwalk Condominiums.

Pinnacle Drive: A 22 foot wide town-owned access path can be identified by a Trail Kiosk at the intersection of Pinnacle Drive and Misty Lane. There is no parking in this neighborhood. Park at Ellis Field and walk to this trailhead.

West End: Park on the shoulder of Hemlock St near the Plimpton Street end and climb the steps next to the trail kiosk on Plimpton Street.



Rose Court Trail Access



Pinnacle Drive Kiosk



Plimpton St Kiosk



Bog Bridge



Trail Closure



## Walpole Town Forest

The Walpole Town Forest is approximately 365 acres of managed forest. Approximately 150 acres lie east of Washington St, the remaining 200+ acres are west of Washington St, behind the High School.

It is traversed by 9.3 miles of hiking trails.

A trail map was updated in May 2017. Other information can be found at the Town Forest website.

<http://www.walpole-ma.gov/TownForest.htm>

